



**EggLifter**

The world's simplest egglift

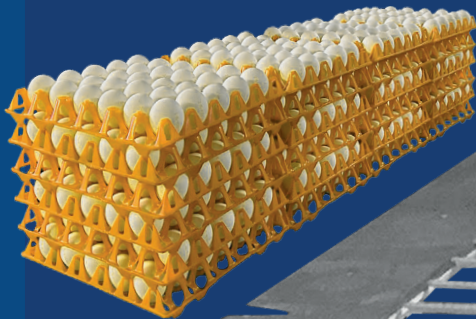




Save your back palletizing eggs the quickest and easiest way



The EggLifter is used every day to the full satisfaction of many egg producers and packing stations around the world.



The EggLifter has established itself as the most cost-effective and user-friendly solution for egg palletization. With a design focused on simplicity and efficiency, this innovative setup allows poultry farmers to stack and palletize eggs in an effortless manner. It minimizes the complexity and costs associated with other palletizing systems, making it a favourite choice in the poultry industry.

Proven success

The EggLifter has proven itself to be a reliable and sustainable investment. Its consistency in performance and ability to meet the demands of poultry farmers make it a necessary tool on every poultry farm.

Simple design for maximum efficiency

Designed to palletize four stacks of eggs simultaneously on a pallet, the EggLifter offers exceptional efficiency. With manual operation, without the need for sensors or complicated structures, it not only minimizes

maintenance needs but also ensures an ergonomic working environment. The physical strain is minimal, which prevents back and shoulder complaints. A pallet can be quickly filled; this allows you or your staff more time for egg quality control at the farm packer. The EggLifter not only saves time but also guarantees the highest standards in egg management.

Good choice!



Save your back



**Designed to fit
your poultry farm**



**Stack a pallet
full in 3 minutes**

EggLifter

Easy flow

- › Lifting fork can move forward and backward
- › Reachable stacking area: $\approx 10'9" \times 3'$ [327 x 90 cm] (inside the rail)
- › Stacks five high
- › Standard pallet rack included

Ceiling height:

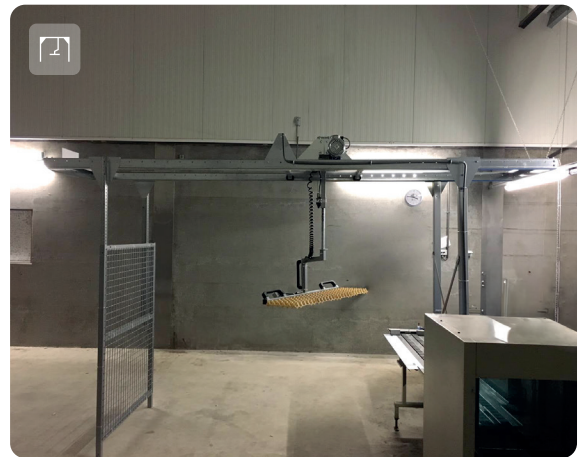
Minimum 9'6" [290 cm] required

Ceiling lower than 9'6" [290 cm]?

Contact your dealer for a special solution.

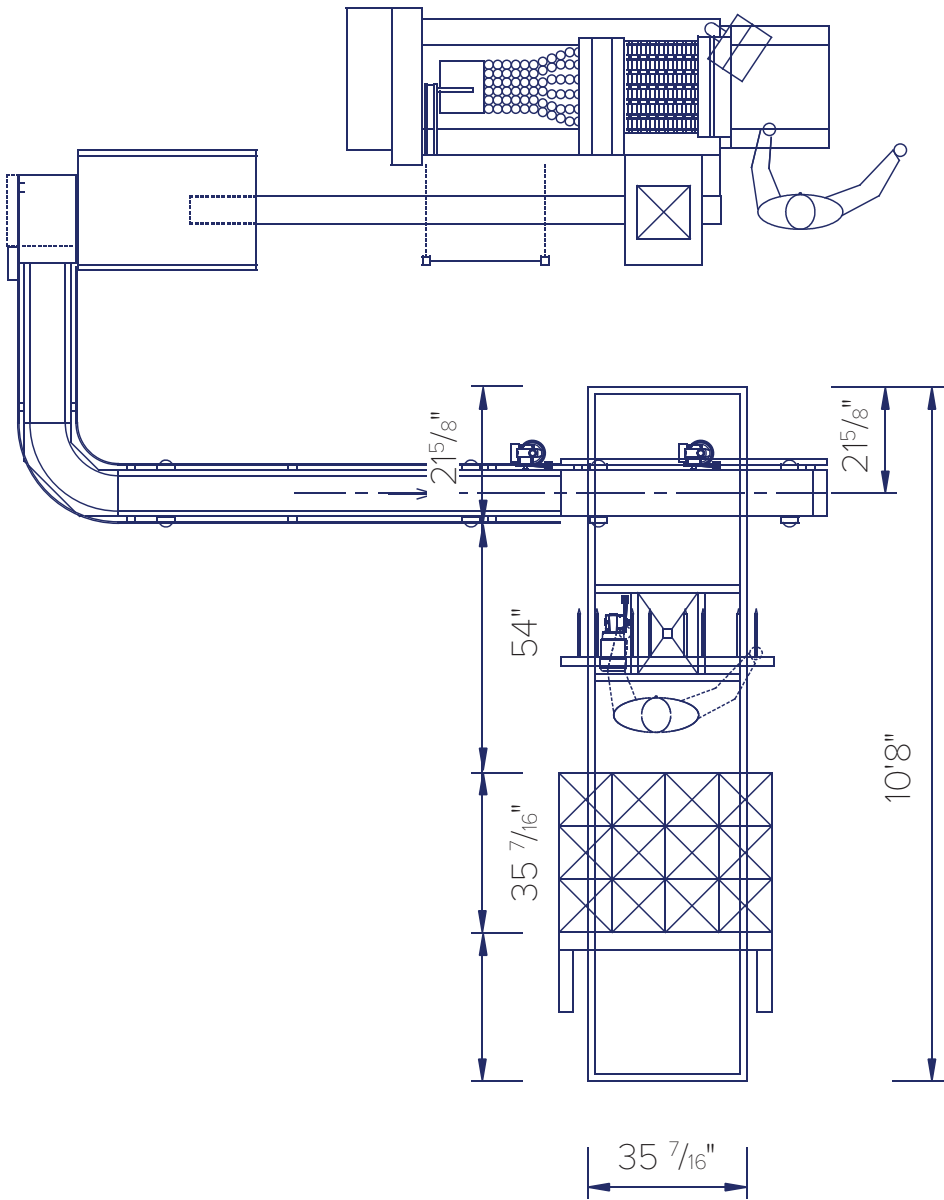


Installation mounted on the ceiling



Installation mounted on the ground





EggLifter

Easy flex

- › Lift fork can move forward, backward, left and right
- › Reachable stacking area: 9'10" x 8'10" [300 x 270 cm]
- › Stacks five high
- › Standard pallet rack included

Ceiling height:

Minimum 9' 6" [290 cm] required

*Ceiling lower than 9' 6" [290 cm]?
Contact your dealer for a special solution.*



Installation mounted on the ceiling

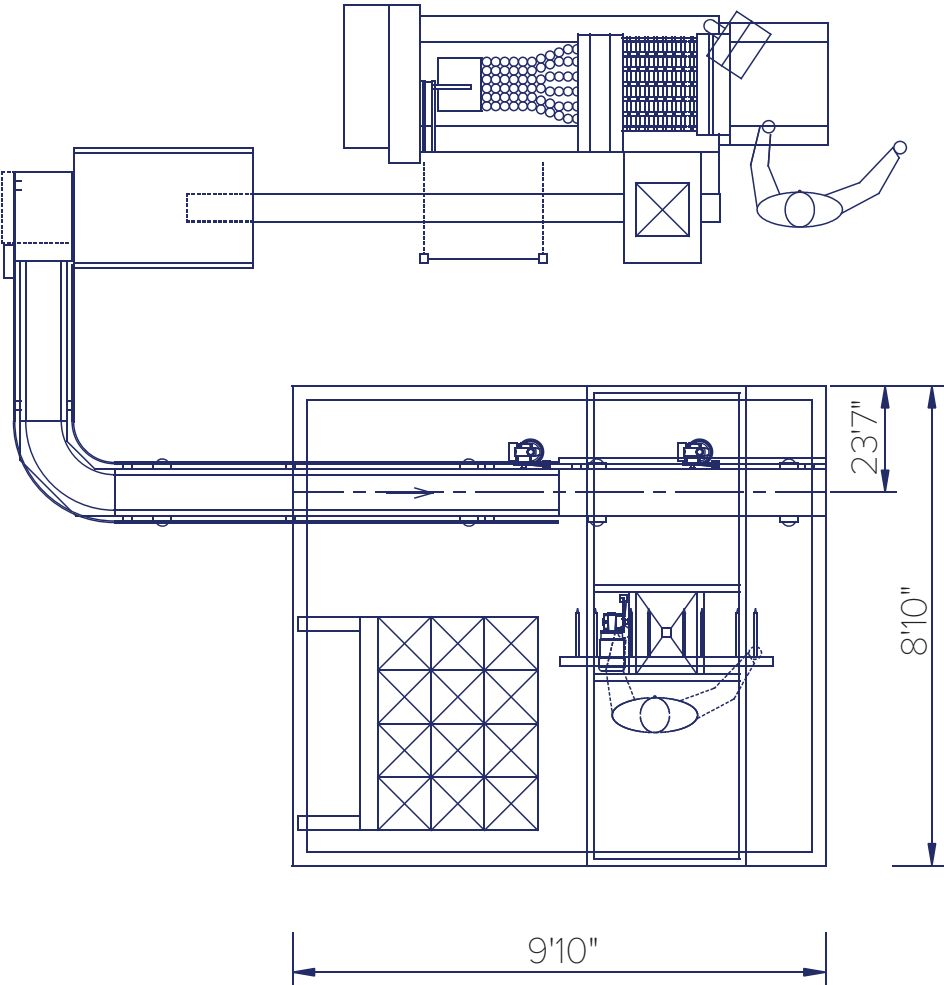


Installation mounted on the ground



Depending on your packing room the EggLifter can be installed on the floor or on the ceiling, to maximize efficiency.

Technical drawing



The solution for every poultry farm

Save time and stack efficiently

Stack eggs on pallets with little physical effort using **EggLifter**. Thanks to its compact design, one of our models is almost always applicable to any poultry farm.



Depending on the supply,
a pallet can be filled within
3 minutes.



Used daily to the full
satisfaction of poultry farmers
around the world.

CountyLine



sales@county-line.ca
519-291-5012
www.county-line.ca



Scan the QR code to
view our **website** or
go to www.eggliifter.com

